

Product Assortment



DELIBAKE
For life's delicious moments

About Delibake



Delibake is a Swedish bakery company and has one of northern Europe's most modern and efficient production lines for biscuits and cookies. The company is located in Örebro and was founded in 1990. In addition to traditional Swedish biscuits, the range also consists of cookies, gingerbread, punch rolls and chocolate balls.

We are a flexible and customer oriented company that works closely together with our customers in order to meet their requirements. Our products are available in several markets under our own brand, but predominantly under private-label. Export accounts for 80% of our total sales.

With our high-quality products, knowledge and flexibility, we serve as a strong partner in long-term partnerships. We are certified in accordance with IFS, RSPO.

The Swedish Tradition of Fika

Fika is a social institution in Sweden. It means having a break - usually a coffee break - with colleagues, friends or family. It almost always includes something to eat, such as cookies or cakes accompanied with a beverage.

This practice of taking a break, typically with some biscuits or cookies, is central to Swedish life and culture.



Delibake in brief:

Number of employees: approx. 43

Turnover 2018: € 12 million

New, modern production facility in Örebro, Sweden

Certified in accordance with IFS, RSPO, and UTZ. HACCP.

80/20 Export/Domestic sales

Major supplier of private-label

Three production lines for biscuits

Three production lines for pastries



Chocolate Chips

*"Two lovely oatmeal delights
with chocolate filling in between.
A true favourite."*



Ingredients:

Sugar, cocoa glaze (sugar, vegetable fat [palm and shea oil], fat-reduced cocoa powder 2.9%, emulsifier [**soy lecithin**, E492 vegetable fat]), **oatmeal**, vegetable margarine (vegetable fat [palm, rapeseed and coconut oil], water, salt, emulsifiers [E471 vegetable fat], aroma, acidity regulator [citric acid]), **wheat flour**, water, baking powder (E450, E500), **egg powder**.

May contain traces of almonds.



Product info:

Product	Chocolate Chips 600 g	Chocolate Chips 275 g
Item no.	Del-1434	Del-1414
EAN	7330122810038	7330122813039
Pcs./box	12	
Boxes/Pallet	32	345 tins/half pallet
Shelf life	9 months	

Nutritional info per 100 g:

Energy	2100 kJ / 500 kcal
Fat	23.5 g
Of which saturates	12.5 g
Carbohydrates	67.7 g
Of which sugars	33.0 g
Protein	4.9 g
Salt	0.88 g

Packaging:



600 g tray



275 g tin

Oatmeal Delight

"A thin and crispy oatmeal delight with a distinct oaty flavour."



Ingredients:

Sugar, **oatmeal 23%**, vegetable margarine (vegetable fat [palm, rapeseed and coconut oil], water, salt, emulsifier [E471 vegetable fat], aroma, acidity regulator [citric acid]), **wheat flour**, water, baking powder (E450, E500) **egg powder**.

May contain traces of almonds.



Product info:

Product	Oatmeal Delight 600 g	Oatmeal Delight 275 g
Item no.	Del-1426	Del-1402
EAN	7330122810021	7330122813022
Pcs./box	12	
Boxes/Pallet	32	345 tins/half pallet
Shelf life	12 months	

Nutritional info per 100 g:

Energy	2030 kJ / 485 kcal
Fat	20.1 g
Of which saturates	8.6 g
Carbohydrates	70.1 g
Of which sugars	46.8 g
Protein	5.2 g
Salt	1.20 g

Packaging:



600 g tray



275 g tin

Oatmeal Cookie

"A robust oatmeal cookie with a distinct and irresistible character of oats."



Ingredients:

Oatmeal 36%, sugar, vegetable margarine (vegetable fat [palm, rapeseed and coconut oil], water, salt, emulsifier [E471 vegetable fat], aroma, acidity regulator [citric acid]), **wheat flour**, baking powder (E500, E503, E504).

May contain traces of almonds and eggs.



Product info:

Product	Oatmeal Cookie 600 g	Oatmeal Cookie 275 g
Item no.	Del-1425	Del-1413
EAN	7330122810090	7330122813091
Pcs./box	12	
Boxes/Pallet	32	345 tins/half pallet
Shelf life	12 months	

Nutritional info per 100 g:

Energy	2161 kJ/517 kcal
Fat	28.9 g
Of which saturates	15.0 g
Carbohydrates	56.1 g
Of which sugars	29.1 g
Protein	5.6 g
Salt	0.63 g

Packaging:



600 g tray



275 g tin

Farmers' Cookie

"A classic cookie with distinct flavours of almond and syrup."



Ingredients:

Wheat flour, sugar, vegetable margarine (vegetable fat [palm, rapeseed and coconut oil]), water, salt, emulsifiers [E471 vegetable fat], aroma, acidity regulator [citric acid]), **almond**, syrup, water, baking powder (E500).

May contain traces of egg.



Product info:

Product	Farmers' Cookie 600 g	Farmers' Cookie 275 g
Item no.	Del-1427	Del-1610
EAN	7330122810045	7330122813046
Pcs./box	12	
Boxes/Pallet	32	345 tins/half pallet
Shelf life	12 months	

Nutritional info per 100 g:

Energy	2100 kJ/500 kcal
Fat	22.4 g
Of which saturates	9.2 g
Carbohydrates	66.6 g
Of which sugars	29.7 g
Protein	5.5 g
Salt	0.93 g

Packaging:



600 g tray



275 g tin

Jam Cookie

”A crispy, piped shortbread cookie topped with lovely raspberry jam.”



Ingredients:

Wheat flour, vegetable margarine (vegetable fat [palm, rapeseed and coconut oil], water, salt, emulsifiers [E471 vegetable fat], aroma, acidity regulator [citric acid]), sugar, water, raspberry filling (sugar, raspberry 3.5%, thickening agent [sodium alginate, pectin], acidity regulator [citric acid, disodium phosphate, Calcium citrates] preservative [potassium sorbate], raspberry aroma 0.2%), vanilla flavor 0.2%.

May contain traces of almonds and eggs.



Product info:

Product	Jam Cookie 600 g	Jam Cookie 275 g
Item no.	Del-1431	Del-1401
EAN	7330122810052	7330122813053
Pcs./box	12	
Boxes/Pallet	32	345 tins/half pallet
Shelf life	12 months	

Nutritional info per 100 g:

Energy	2067 kJ/494 kcal
Fat	25.9 g
Of which saturates	6.2 g
Carbohydrates	60.2 g
Of which sugars	27.9 g
Protein	4.5 g
Salt	0.43 g

Packaging:



600 g tray



275 g tin

Vanilla Dream

"A crispy, vanilla flavoured cookie that melts in your mouth."



Ingredients:

Wheat flour, sugar, vegetable margarine (vegetable fat [palm, rapeseed and coconut oil]), water, salt, emulsifier [E471 vegetable fat], aroma, acidity regulator [citric acid]), rapeseed oil, vanilla flavouring 1%, raising agents (E450, E500, E503, E504).

May contain traces of almonds and eggs.



Product info:

Product	Vanilla Dream 600 g	Vanilla Dream 275 g
Item no.	Del-1432	Del-1403
EAN	7330122810069	7330122813077
Pcs./box	12	
Boxes/Pallet	32	345 tins/half pallet
Shelf life	12 months	

Nutritional info per 100 g:

Energy	2200 kJ/520 kcal
Fat	26.0 g
Of which saturates	9.0 g
Carbohydrates	67.0 g
Of which sugars	36.2 g
Protein	4.5 g
Salt	0.28 g

Packaging:



600 g tray



275 g tin

Caramel Cookie

"Oval wafer with a distinct caramel flavour. Once you've tasted one it will hard to stop!"



Ingredients:

Wheat flour, vegetable margarine (vegetable fat [palm, rapeseed and coconut oil], water, salt, emulsifiers [E471 vegetable fat], aroma, acidity regulator [Citric acid]), sugar, syrup, baking powder (E500), aroma.

May contain traces of almonds and eggs.



Product info:

Product	Caramel Cookie 600 g	Caramel Cookie 275 g
Item no.	Del-1642	Del-1612
EAN	7330122810205	7330122813060
Pcs./box	12	
Boxes/Pallet	32	345 tins/half pallet
Shelf life	12 months	

Nutritional info per 100 g:

Energy	2056 kJ/491 kcal
Fat	25.8 g
Of which saturates	10.4 g
Carbohydrates	60.3 g
Of which sugars	33.5 g
Protein	4.5 g
Salt	1.35 g

Packaging:



600 g tray



275 g tin

Oatmeal Cookie with chocolate

*"Our classic Oatmeal Cookie
with chocolate stripes.
A tasty combination of oats
and chocolate."*



Ingredients:

Oatmeal 32%, sugar, vegetable margarine (vegetable fat [palm, rapeseed and coconut oil]), water, salt, emulsifier [E471 vegetable fat], acidity regulator [citric acid]), **wheat flour**, cocoa glaze (sugar, vegetable fat [palm and shea] fat-reduced cocoa powder 1.2%, aroma, emulsifier [**soy lecithin**, E492 of vegetable fat]), baking powder (E500, E503, E504).

May contain traces of almonds and eggs.



Product info:

Product	Oatmeal Cookie with chocolate 600 g	Oatmeal Cookie with chocolate 275 g
Item no.	Del-1613	Del-1611
EAN	7330122810212	7330122813121
Pcs./box	12	
Boxes/Pallet	32	345 tins/half pallet
Shelf life	9 months	

Nutritional information per 100 g:

Energy	2100 kJ/500 kcal
Fat	29.5 g
Of which saturates	15.5 g
Carbohydrates	55.4 g
Of which sugars	28.7 g
Protein	5.3 g
Salt	0.60 g

Packaging:



275 g tin

Gingerbread



"Classic Gingerbread with traditional spices like cinnamon, ginger and cloves."

Ingredients:

Wheat flour, sugar, vegetable margarine (vegetable fat [palm, rapeseed and coconut oil], water, salt, emulsifier [E471 of vegetable fat], aroma, acidity regulator [citric acid]), syrup, water, baking powder (E500), cinnamon, ginger, cloves.

May contain traces of almonds and eggs.



Product info:

Product	Ginger Bread 600 g	Ginger Bread 275 g
Item no.	Del- 1488	Del-1404
EAN	7330122810083	733012281287
Pcs./box	12	
Boxes/Pallet	32	345 tins/half pallet
Shelf life	12 months	

Nutritional info per 100 g:

Energy	1928 kJ/458 kcal
Fat	14.9 g
Of which saturates	1.0 g
Carbohydrates	75.2 g
Of which sugars	27.4 g
Protein	5.8 g
Salt	1.50 g

Packaging:



600 g tray



275 g tin

Heart shaped Gingerbread Figure shaped Gingerbread



Ingredients:

Wheat flour, sugar, syrup, rapeseed oil, water, baking powder (E500), cinnamon, ginger, salt, cloves.

May contain traces of almonds and eggs.

Product info:

Product	Heart shaped Gingerbread	Figure shaped Gingerbread
Item no.	DeI-0018	DeI-0017
EAN	7330122810359	7330122810342
Pcs./box		
Boxes/Pallet	180 tins/half pallet	150 tins/half pallet
Shelf life	12 months	12 months

Nutritional info per 100 g:

Energy	1950 kJ / 470 kcal
Fat	16 g
Of which saturates	1,2 g
Carbohydrates	74 g
Of which sugars	33 g
Protein	4,0 g
Salt	1,6 g

Packaging:



300 g tin



340 g tin

Mixed Cookies

"The perfect package for all Fika fans wanting variation. Mixed Cookies contains Oatmeal Cookies, Farmers' Cookies, Caramel Cookies and Vanilla Dreams."



Caramel Cookie



Vanilla Dream



Oatmeal Cookie



Farmers' Cookie

Packaging:



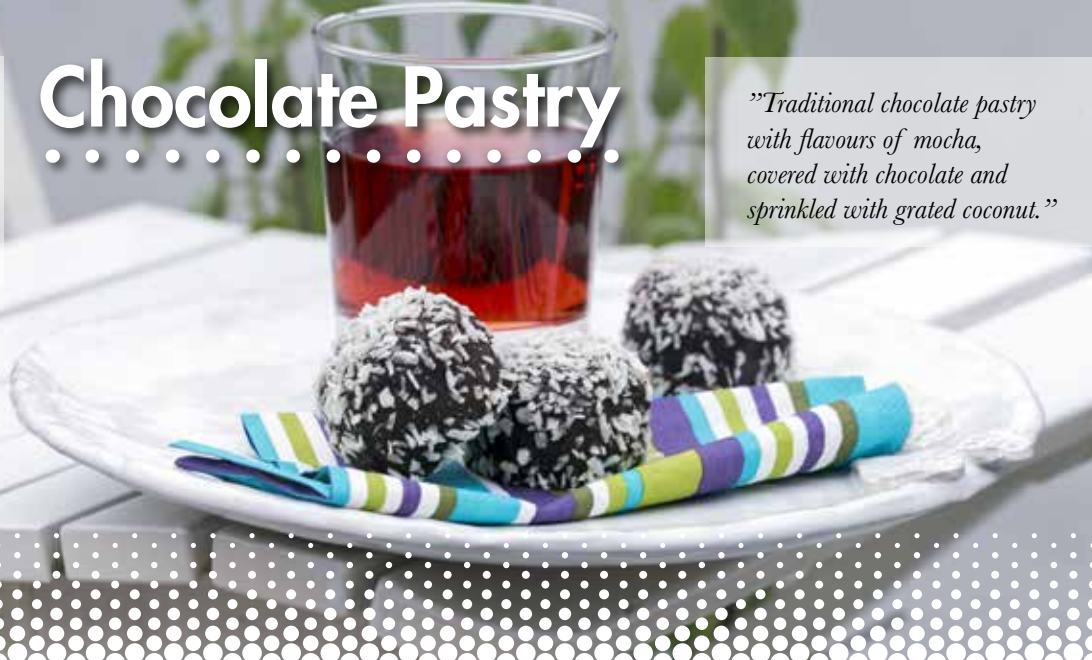
600 g tray

Product info:

Product	Mixed Cookies 490 g
Item no.	Del-0005
EAN	7330122810274
Pcs./box	12
Boxes/Pallet	32
Shelf life	12 months

Chocolate Pastry

”Traditional chocolate pastry with flavours of mocha, covered with chocolate and sprinkled with grated coconut.”



Ingredients:

Oatmeal, sugar, vegetable margarine (vegetable fat [palm, rapeseed and coconut oil]), water, salt, emulsifiers [E471 vegetable fat], acidity regulator [Citric acid]), cocoa glaze (sugar, vegetable fat [palm and shea oil]), fat-reduced cocoa powder 2.9%, aroma, emulsifier [**soy lecithin**, E492 vegetable fat]), coconut flakes, fat-reduced cocoa powder, flavouring, preservatives (potassium sorbate).



Product info:

Product	Chocolate Pastry 500 g	Chocolate Pastry 180 g	Chocolate Pastry 30 g
Item no.	Del-1456	Del-1398	Del-1409
EAN	7330122208101	7330122830067	7330122800039
Pcs./box		18	ca 120
Boxes/Pallet		44	60
Shelf life	4 months		

Nutritional info per 100 g:

Energy	2100 kJ/500 kcal
Fat	28.7 g
Of which saturates	15.3 g
Carbohydrates	58.7 g
Of which sugars	38.0 g
Protein	4.1 g
Salt	0.33 g

Packaging:



10-pack 500 g



6-pack 180 g



Single pack 30 g

Arrack Pastry

"Delicious arrack pastries containing an oatmeal filling with an arrack flavour, covered by chocolate and topped with chocolate sprinkles."



Ingredients:

Oatmeal, sugar, vegetable margarine (vegetable fat [palm, rapeseed and coconut oil], water, salt, emulsifiers [E471 vegetable fat], acidity regulator [citric acid]), cocoa glaze (sugar, vegetable fat [palm and shea oil], fat-reduced cocoa powder 2,9%, aroma, emulsifier [**soy lecithin**, E492 vegetable fat]), chocolate sprinkles (sugar, cocoa powder, potato starch, glucose syrup, palm oil, glazing agent [beeswax]), fat-reduced cocoa powder; flavouring, preservatives (potassium sorbate).



Product info:

Product	Arrack Pastry 500 g	Arrack Pastry 180 g	Arrack Pastry 30 g
Item no.	Del-1453	Del-1399	Del-1410
EAN	7330122209108	7330122930064	7330122800022
Pcs./box		18	ca 120
Boxes/Pallet		44	60
Shelf life	4 months		

Nutritional info per 100 g:

Energy	2200 kJ/550 kcal
Fat	32.2 g
Of which saturates	21.0 g
Carbohydrates	55.3 g
Of which sugars	32.4 g
Protein	4.4 g
Salt	0.41 g

Packaging:



10-pack 500 g



6-pack 180 g



Single pack 30 g

Punch Roll

"A really classic, marzipan coated oatmeal filling with delicious chocolate. As a true punch roll should be."



Ingredients:

Oatmeal, sugar, marzipan (15% sugar, **almonds**, glucose, stabilizer: sorbitol, invert sugar, colourant [E160a, E131], preservative [potassium sorbate]), vegetable margarine (vegetable fat [palm, rapeseed and coconut oil], water, salt, emulsifiers [E471 vegetable fat], acidity regulator [citric acid]), cocoa glaze (sugar, vegetable fat [palm and shea oil], fat-reduced cocoa powder 2.3%, aroma, emulsifier [**soy lecithin**, E492 vegetable fat]), fat-reduced cocoa powder, arrack aroma, preservatives (potassium sorbate).



Product info:

Product	Punch roll 500 g	Punch roll 180 g	Punch roll 30 g
Item no.	Del-1457	Del-1396	Del-1411
EAN	7330122212108	7330122130068	7330122800015
Pcs./box		18	ca 120
Boxes/Pallet		44	60
Shelf life	4 months		

Nutritional info per 100 g:

Energy	2060 kJ/490 kcal
Fat	24.3 g
Of which saturates	11.8 g
Carbohydrates	65.0 g
Of which sugars	38.4 g
Protein	4.3 g
Salt	0.3 g

Packaging:



10-pack 500 g



6-pack 180 g



Single pack 30 g

Tree Trunk

"A variant of the classic Punch Roll. Our tree trunk has an arrack and pistachio flavour, and is coated in white marzipan."



Ingredients:

Oatmeal, sugar, marzipan (15% sugar, **almonds**, glucose, stabilizer: sorbitol, invert sugar, colorant [E171], preservative [potassium sorbate]), vegetable margarine (vegetable fat [palm, rapeseed, coconut oil], water, salt, emulsifiers [E471 vegetable fat], acidity regulator [citric acid]), cocoa glaze (sugar, vegetable fat [palm and shea oil], fat-reduced cocoa powder 2.3%, aroma, emulsifier [**soy lecithin**, E492 vegetable fat]), fat-reduced cocoa powder, flavouring, preservatives (potassium sorbate).



Product info:

Product	Trunk 500 g
Item no.	Del-1482
EAN	7330122203106
Pcs./box	
Boxes/Pallet	
Shelf life	4 months

Nutritional info per 100 g:

Energy	2000 kJ/480 kcal
Fat	24.3 g
Of which saturates	11.8 g
Carbohydrates	63.1 g
Of which sugars	47.4 g
Protein	4.3 g
Salt	0.3 g

Packaging:



10-pack 500 g

3 Kinds of Pastry

"This package consists of our three most popular pastries, Punch Roll, Chocolate Pastry and Arrack Pastry. All products are individually wrapped."



Arrack Pastry



Chocolate Pastry



Punch Roll

Packaging:



750 g tray

Product info:

Product	3 kinds of pastry 600 g
Item no.	Del-0003
EAN	7330122810267
Pcs./box	12
Boxes/Pallet	32
Shelf life	4 months

Mix Pallet Cookie Tins

Del-1497, Cookies tin 275 g Mixed 1/2-pallet 345 pcs			
Chocolate Chips	Del-1414	7330122813039	69 tins
Oatmeal Delight	Del-1402	7330122813022	69 tins
Oatmeal Cookie	Del-1413	7330122813091	46 tins
Caramel Cookie	Del-1612	7330122813060	46 tins
Jam Cookie	Del-1401	7330122813053	46 tins
Vanilla Dream	Del-1403	7330122813077	69 tins



Mix Pallet Cookie Boxes

Del-1498, Cookie Boxes 600 g Mixed 1/1-pallet 384 pcs				
Farmers' Cookie	Del-1427	7330122810045	4 box	48 pcs
Chocolate Chips	Del-1434	7330122810038	8 box	96 pcs
Oatmeal Delight	Del-1426	7330122810021	6 box	72 pcs
Caramel Cookie	Del-1642	7330122810205	6 box	72 pcs
Jam Cookie	Del-1431	7330122810052	4 box	48 pcs
Vanilla Dream	Del-1432	7330122810069	4 box	48 pcs



Display Pallet Mixed Cookies



Del-0012, Mixed Cookies 490 g Expo-pallet 104 pcs

Farmers' Cookie

Oatmeal Cookie

Caramel Cookie

Vanilla Dream



Farmers' Cookie Oatmeal Cookie



Caramel Cookie Vanilla Dream



Arrack Pastry Punch Roll Chocolate Pastry



Display Pallet 3 kinds of pastry



Del-0013, 3 kinds of pastry 600 g Expo-pallet 104 pcs	
Arrack Pastry	
Punch Roll	
Chocolate Pastry	



Mixed Pallet Pastries 6-pack

Del-1400, Mixed Pastries 6-pack 180 g Expo-pallet 792 pcs				
Arrack Pastry	Del-1399	7330122930064	6 dfp	108 kfp
Chocolate Pastry	Del-1398	7330122830067	16 dfp	288 kfp
Punch Roll	Del-1396	7330122130068	22 dfp	396 kfp



Assortment Overview

Cookies	600 g Packages	275 g Tin
Chocolate Chips	Del-1434	Del-1414
Oatmeal Delight	Del-1426	Del-1402
Oatmeal Cookie	Del-1425	Del-1413
Farmers' Cookie	Del-1427	Del-1610
Jam Cookie	Del-1431	Del-1401
Vanilla Dream	Del-1432	Del-1403
Chocolate Dream	Del-1487	Del-1405
Caramel Cookie	Del-1642	Del-1612
Oatmeal Cookie with chocolate	Del-1613	Del-1611
Mixed Cookies	Del-0005	
Gingerbread	Del-1488	Del-1404
Heart shaped Gingerbread		Del-0018
Figure shaped Gingerbread		Del-0017

Pastries	10-pack 500 g	6-pack 180 g	Single pack 30 g
Chocolate Pastry	Del-1456	Del-1398	Del-1409
Arrack Pastry	Del-1453	Del-1399	Del-1410
Punch Roll	Del-1457	Del-1396	Del-1411
Tree Trunk	Del-1482		
3 Kinds of Pastry	Del-0006		

Mixed and Display Pallets	
Mix Pallet Cookie Tins	Del-1497
Mix Pallet Cookie Boxes	Del-1498
Display Pallet Mixed Cookies	Del-0012
Display pallet 3 Kinds of Pastry	Del-0013
Mixed pallet Pastries 6-pack	Del-1400

Delibake i Örebro AB

Grusgropsvägen 2
702 36 Örebro, Sweden
+46 19 304060
info@delibake.se
www.delibake.se

Contact details:

order@delibake.se
+46 19 304060

Fredrik Gustafsson

Sales Manager
fredrik.gustafsson@delibake.se
+ 46 19 304061

Per Hellström

Key Account Manager
per.hellstrom@delibake.se
+46 19 304072

Mattias Nylén

Marketing Manager
mattias.nylen@delibake.se
+46 19 304064


For life's delicious moments